



## Therapeutic Horticulture in Marathon County

Gaining Ground is a therapeutic horticulture program in conjunction with ATTIC Services community service and drug court in Marathon County. Participants with court mandated community service hours garden Sunday mornings throughout the growing season. The season started with the transplanting of the fruit trees at Thomas and Grand to two city parks. Five plums were moved to Pleasant View park, while 14 apples, pears, and cherries were transplanted at 3M park where they will continue to provide fresh and free fruit for local neighborhoods.



Other Gaining Ground projects for this season include:

**\*\*Women's transitional sober living home on 3rd Street.** We will continue vocational training as the participants work to enhance the landscaping with perennial and annuals, as well as vegetable raised bed production in two beds.

**\*\*ATTIC Services.** We will continue to improved the meditation garden as well as grow plants for cut flower production.

**\*\*Weston YMCA Community Garden.** We will work in these gardens as needed for vegetable production. All harvested plants will be donated to area food pantries.

The Teaching Garden at 212 River Drive will be utilized by a therapeutic horticulture Hmong domestic survivor support group. Participants will utilize the garden, planting and harvesting culturally significant herbs and crops. This group meets monthly, but participants are free to utilize the garden space through the growing season.

## FoodWise is Hiring

FoodWise is hoping to hire a new full-time Marathon County Nutrition Educator, and in the meantime, Nutrition Educators from other counties have pitched in to support scheduled programming in Marathon County. In April, Portage County Educator Penny Schmitt taught a class featuring whole grains and label reading. Wood County Educator Hannah Wendels and Clark County Educator Thalia Mauer came to Marathon County to teach the nutrition education Healthy Eating Series offered to SNAP-eligible residents in May.

Participants learned about healthy lifestyle choices, food preparation, food safety, food resource management and physical activity. The focus of May's class was healthy drinks and education around sugar consumption. The goal of the series is to improve healthy eating and physical activity habits for Marathon County residents.



## Agriculture Update

Heather spent time this past month preparing her new lab space for her upcoming research projects. Starting July 1st, Heather will collect blood and milk samples for two research projects. In the first project, Heather measures the serum total protein of calves aged 1 – 7 days. The goal of the project is to determine if there are differences in colostrum feeding practices between heifer, bull, and crossbred calves. In the second project, Heather will collect milk samples from all four quarters to determine the presence or absence of Prototheca Bovis. Prototheca Bovis is an alga recently found to cause mastitis in bovines. However, due to its slow-growing nature, it has previously been undiagnosed. Heather will utilize special agar that inhibits other mastitis pathogens from growing and optimizes the growth of Prototheca Bovis.

Heather is wrapping up her survey of veterinarians and farmers regarding their use of nonsteroidal anti-inflammatory drugs for pain management in cattle.

Heather is still collecting surveys on the educational needs of QuickBooks users. The second mailing of a paper survey was just completed. Surveys also went out via social media and county/state newsletters.

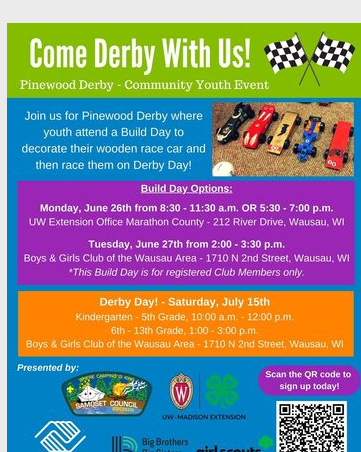
Lastly, Heather recently completed another Artificial Insemination Course. While most participants were from Marathon, Clark, and Taylor Counties, we also had a few from southern Wisconsin and Illinois.



## Marathon County 4-H News

We are on the go! Check out the website for upcoming 4-H activities!

Want to participate in upcoming 4-H programs like the 4-H Foodie, camps, travel experiences, projects, and more? Stay tuned to our [Facebook page](#), [bi-weekly newsletters](#), and the [Marathon County 4-H website](#) for more information. Or, contact our office at 715-261-1230.



### DID YOU KNOW?

Extension-Marathon County colleagues submit a monthly report to the Extension, Education and Economic Development Committee regarding their efforts? You can access those reports via the [committee meeting archives](#).

## Upcoming Extension Programs

Below are some upcoming programs that Extension-Marathon County colleagues are helping to lead. Feel free to join the conversations or send to others that may be interested.

- **FoodWise Healthy Eating Series** - This is a monthly lesson in nutrition with a short food demonstration. Income limits apply and registration is required. Please email [Mallory McGivern](#) for more information.
- **4-H Programming** - Check out our website for the upcoming programs. <https://marathon.extension.wisc.edu/projects/programs/>
- **Strong Bodies** – Virtual Strong Bodies Spring 2023 Session – register at <https://go.wisc.edu/71ptij>.

An EEO/AA employer, Extension provides equal opportunities in employment and programming, including Title VI, Title IX, and the Americans with Disabilities Act (ADA) requirements.

<https://marathon.extension.wisc.edu/>

Share this email:



Manage your preferences | Opt out using TrueRemove®

Got this as a forward? Sign up to receive our future emails.

View this email online.

3001 US Highway 12 East  
Menomonie, WI | 54751 US

This email was sent to .  
To continue receiving our emails, add us to your address book.



[Subscribe](#) to our email list.