

Artificial Insemination is on the MOOOOVE Again



Heather Schlessler, UW Marathon County Extension's Dairy Educator, is heading to Madison, again. Heather's presentation made an impact at the All Colleague Conference, she was asked to return to Madison this summer with her AI program. Heather and her colleague, Sandy Stuttgen, Agriculture Educator in Taylor County, have work tirelessly to help dairy and beef farmers throughout the midwest improve their herds population. Congrats Heather!



Marathon County 4-H Fall 2022 Recap

The Marathon County 4-H educators, Holly and Jasmine, were busy this fall 2022 offering a variety of educational programs and outreach to a diverse range of audiences in the county. Two partnerships that were strengthened this fall were with the Hmong & Hispanic Communication Network (H2N) and the Growing Great Minds (G2M) Out of School Program. Thanks to these partnerships, 4-H has been at various outreach events with the Latinx community (H2N) and expanding what 4-H looks like for kindergarten through 13th grade in our local community (G2M).

Local 4-H Clubs also benefited from one-on-one educational sessions by inviting the educators to their monthly club meetings. One of those clubs was Badger 4-H Club where Jasmine made sugar skulls and taught about the Day of the Dead holiday with the members. This was an activity that Jasmine was also able to share at Hawthorne Hills Elementary in Wausau at their monthly Family Night for November. Another big program hit this fall was 4-H Foodie. Participants of 4-H Foodie have loved engaging in cooking and learning about MyPlate during these monthly sessions. Tostadas, Flatbreads, and Tamales are some of the foods 4-H and non-4-H youth have been able to make during the Foodie classes.

The first week of October we celebrated National 4-H Week by doing a kick-off event at Schairer's Autumn Acres, LLC. This event was able to expose families to different types of 4-H activities, what 4-H is, and promote upcoming 4-H activities in the community. Goosechase was also used for a digital scavenger hunt competition between 4-H clubs/families in Marathon County. We were able to gain an AmeriCorp 4-H Program Assistant that has helped with Take & Learn boxes, weekend programming, and social media and program communication to expand the reach of Marathon County 4-H. The Marathon County 4-H team has had a busy fall 2022 and is excited to keep engaging Marathon County youth into 2023!

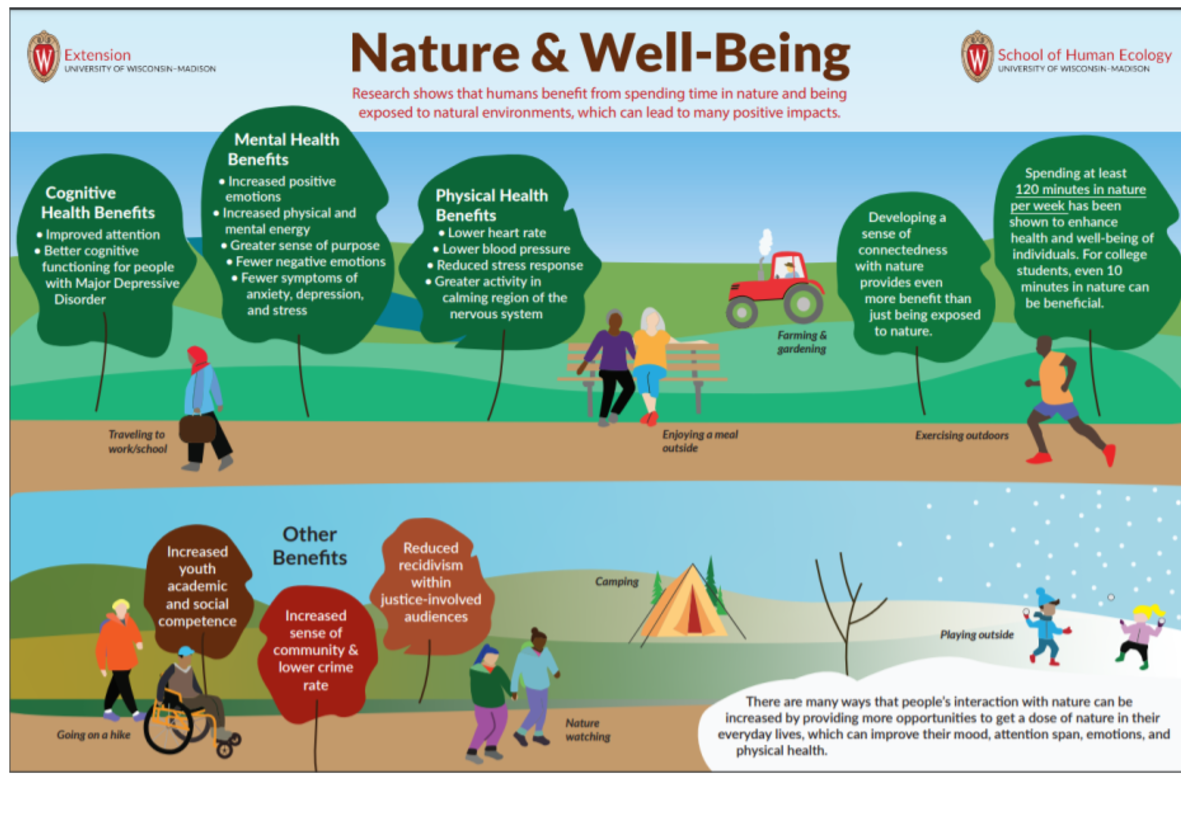


Fulfilling with Wisconsin Idea with Social Media

Marathon County Extension horticulture educator, Janell Wehr, presented with a team of other county-based horticulture educators at the All-Colleague Conference earlier this month. The team shared how they have expanded the outreach in social media, informally educating and driving social media users to the Extension Horticulture Program website, a resource with best gardening practices and information to reduce pesticide use and increase pollinator habitats. This past year, the Horticulture Program Facebook page grew into the largest social media outreach platform in Extension, more than doubling its followers. In total, our content reached nearly 1.3 million people this year. We know that when people gain knowledge, understanding, or experience a change in attitude that a proportion (not all) of them will implement that knowledge or understanding or attitude change into new behaviors or practices. It is critical that we meet audiences 'where they're at' because adults have agency and will decide for themselves what they want to learn. With social media, the horticulture program is reaching Marathon County residents where they are at. Please reach out to [Janell](#) with any questions. Want to check out the Facebook page? [Click here](#).

Connecting Wisconsin's Natural Resources with Human Health and Well-Being

Janell Wehr, Marathon County Extension horticulture educator, presented a poster with another team of colleagues from multiple institutes and specialists within Extension. Extension educators recognize that the COVID-19 pandemic has reinforced the value of nature to the people of Wisconsin, especially during difficult times, and see an opportunity for a coordinated, evidence-based approach. A team of cross institute educators, faculty, and students has been working to survey Extension programming and existing research in this area through a Baldwin Wisconsin Idea Seed Grant. They shared the findings of a colleague survey and literature review as well as shared tools (e.g., an infographic and a lay summary of research) to communicate the findings and discuss the next steps in this project.



4H Youth at Clay Corner

Jasmine and Holly hosted an interactive educational session where Marathon County 4-H youth in kindergarten through 13th grade learned about painting ceramic ornaments and the glazing process in order to increase and expand their painting knowledge and develop their art spark. The youth had fun getting creative and got to try Mexican hot chocolate as well!



Marathon County 4-H News

We have been on the go! Check out these recent 4-H activities!

Want to participate in upcoming 4-H programs like the 4-H Foodie Pop Ups, camps, travel experiences, projects, and more? Stay tuned to our [Facebook page](#), [bi-weekly newsletters](#), and the [Marathon County 4-H website](#) for more information. Or, contact our office at 715-261-1230.

DID YOU KNOW?

Extension-Marathon County colleagues submit a monthly report to the Extension, Education and Economic Development Committee regarding their efforts? You can access those reports via the [committee meeting archives](#).

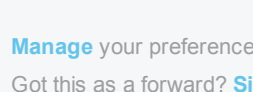
Upcoming Extension Programs

Below are some upcoming programs that Extension-Marathon County colleagues are helping to lead. Feel free to join the conversations or send to others that may be interested.

- FoodWise Healthy Eating Series** - This is a monthly lesson in nutrition with a short food demonstration. Income limits apply and registration is required. Please email [Gaonou Thao](#) for more information.
- Badger Dairy Insights** - Join the University of Wisconsin-Madison – Division of Extension's Dairy Program on Tuesdays from 1 to 2:30 pm CST for the Badger Dairy Insight webinar series. <https://dairy.extension.wisc.edu>
- 4-H Programming** - Check out our website for the upcoming programs. <https://marathon.extension.wisc.edu/projects/programs/>
- Strong Bodies** – Virtual Strong Bodies Winter 2023 Session – register at <https://go.wisc.edu/0nik0z>

<https://marathon.extension.wisc.edu/>

Share this email:



Manage your preferences | [Opt out](#) using TrueRemove®

Got this as a forward? [Sign up](#) to receive our future emails.

View this email [online](#).

3001 US Highway 12 East
Menomonie, WI | 54751 US

This email was sent to .

To continue receiving our emails, add us to your address book.

emma

[Subscribe](#) to our email list.